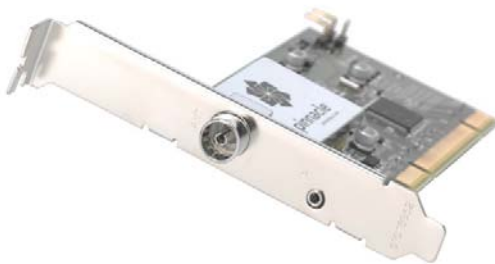




pctv Dual DVB-T PCI

Two tuners make TV on your PC twice as entertaining



Product Overview

PCTV Dual DVB-T PCI features two high-quality digital TV tuners on one PCI board. Used in combination with the included, all-new Pinnacle TVCenter 6 software, PCTV Dual DVB-T delivers a more versatile digital TV and PVR experience. You can enjoy Picture-In-Picture (PiP) viewing on your PC. You can also watch, record and TimeShift two TV programmes at the same time.

Positioning

PCTV Dual DVB-T is a premium PCTV product that combines cutting-edge dual tuner hardware technology with dedicated multi-tuner software. The hardware and software were developed together, assuring easier setup, better performance and higher compatibility.

PCTV Target Market

Typical PCTV customers are technology enthusiasts who want to add full TV and PVR functionality to their PC. They want high quality solutions from a brand name they trust.

Customers for PCTV Dual DVB-T PCI have access to free-to-air DVB-T broadcasts and are passionate about TV. They want maximum flexibility. They want to be able to watch one show while recording another, or watch/record two different shows at the same time. They also want to experiment with new features such as Picture-in-Picture.

Key Features

- Enjoy two digital terrestrial TV or radio* programmes simultaneously
- On your PC, watch one TV show in full screen mode and the other as Picture-In-Picture—or watch two TV shows in moveable, scale-able windows
- Gain full control over two TV programmes with the dual time shift feature
- Record TV programmes directly to hard disk in the original MPEG-2 format or in the space-saving DivX™ format.
- Convert your recordings into MPEG-4 format for playback PSP© and iPod©**
- AutoPowerON for scheduled recordings
- AutoPowerOFF after finished recordings
- Use the included Electronic Program Guide (EPG) to schedule one-time or recurring recordings
- Get ultra-fast Teletext from two channels in parallel and select your favourite Teletext channel while watching another channel
- Remove unwanted parts of your TV recordings with the included video editing application
- Access thousands of Internet radio stations with customizable channel lists***
- Ready for HDTV reception (MPEG-4 AVC/H.264)**
- DistanTV™ software for home network TV streaming (watermarked version)

* DVB-T radio is not available in all regions. ** 15-day trial version, upgradeable at small extra fee; *** Internet connection required

Product Descriptions

25-Word Description

PCTV Dual DVB-T PCI turns your PC into a high-end PVR with two digital TV tuners. Watch, record and Time Shift two different DVB-T programmes independently.

50-Word Description

PCTV Dual DVB-T Pro turns your PC into a high-end PVR with two digital TV tuners and remote control. This all-new PCI board lets you watch, record and Time Shift up to two DVB-T programmes at the same time. The included TVCenter software offers a wide range of PVR and EPG features

100-Word Description

PCTV Dual DVB-T Pro turns your PC into a high-end PVR with two digital TV tuners and remote control. This all-new PCI board lets you watch, record and Time Shift up to two DVB-T programmes at the same time. The integrated AutoPowerON/OFF technology automatically starts the PC and shuts it down for scheduled recordings.

The included TVCenter software offers a wide range of PVR and EPG features, accessible with remote control or keyboard and mouse.

TV shows can be converted to various video formats. The included video editing software lets you remove unwanted parts of your recordings.

Technical Data

System requirements

- Windows XP® or Windows Vista™ with latest Service Pack
- Intel® Pentium® 4 2 GHz or equivalent AMD® Athlon® XP* (recommended: Intel® Pentium® 4 2.4 GHz or equivalent AMD® Athlon® 64)
- HDTV and LAN streaming with DistanTV requires a dual core processor with min. 2GHz. For best results we recommend a PC based on Intel® Core™ 2 Duo E6400 or AMD Athlon™ 64 X2 5400+ or better
- RAM (Windows XP): 256 MB (512 MB recommended)
- RAM (Windows Vista): 512 MB (1GB recommended)
- SATA or UDMA/IDE hard disk with min. 10 GB free capacity (50GB or more free capacity recommended)
- Graphics controller with support for DirectX® 9 or higher
- Internet access for software activations and – extensions

Hardware

Bus-interface: PCI 2.3

DVB-T Tuners:

- VHF and UHF
- Channel bandwidth 6, 7, 8 MHz

Antenna input: IEC connector

PCB dimensions: 120(L) x 65(H) mm

Approvals

CE

Designed for Windows XP (WHQL)

Designed for Windows XP MediaCenter Edition

Important notes on DVB-T reception:

DVB-T reception depends on location and might be impaired by thick or steel-enforced walls, and high neighbouring buildings. In such environments, an outdoor/roof-top DVB-T antenna is required. Mobile reception of DVB-T, e.g. in a car or train, is generally not possible.

Package Contents

Dual-TV tuner PCI board for digital terrestrial TV (DVB-T) reception

Remote control including batteries

CD with

- TVCenter software, drivers and user manuals
- Electronic Program Guide application
- Video Editing application
- Edit.TV software for auto tagging of sports events (trial version)

Printed quick start manual (poster)

Product Name	Part#	UPC Code
PCTV DUAL DVB-T PCI 2000I DGB	21849	785428218496
PCTV DUAL DVB-T PCI 2000I FIE	21860	785428218601

Carton Pack Dimensions

Package Size (L x D x H): O1

135X065X200MM

Gross Weight: 0.450kg