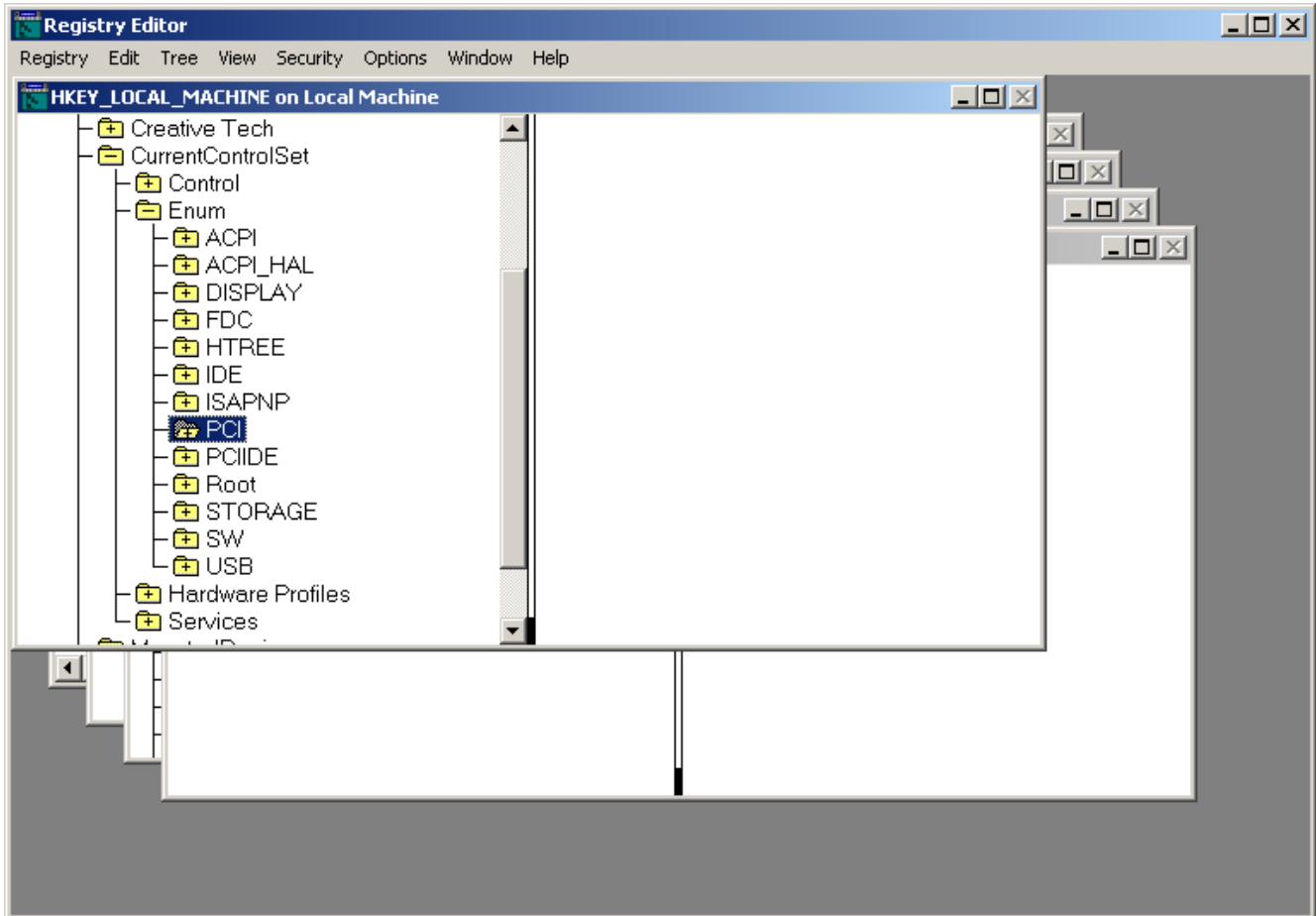


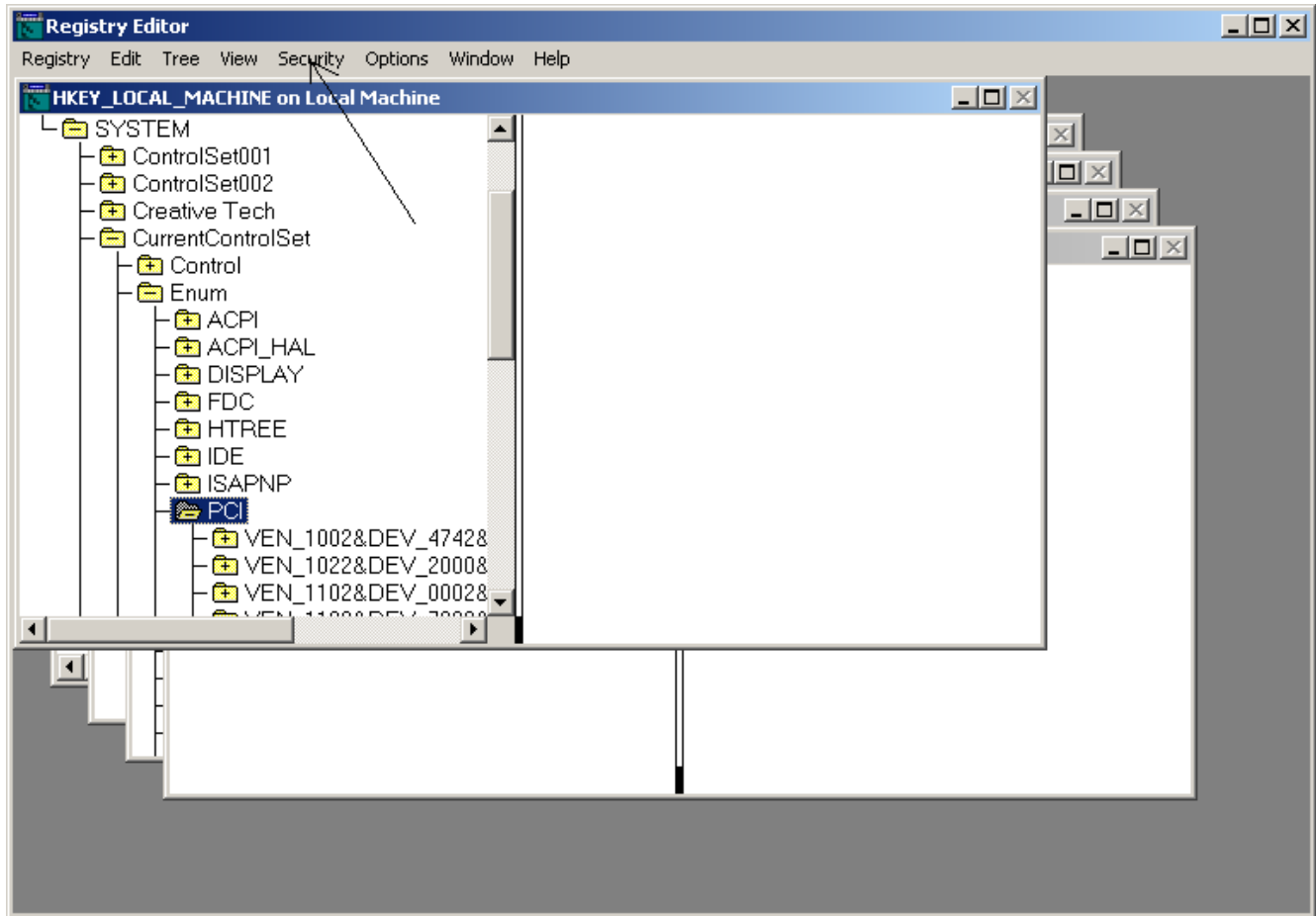
“Data is invalid” when installing a device driver under Windows2000

This error appears to be due to a protection problem in the Windows registry and can occur with a variety of drivers (sound cards and SCSI drivers have been reported). To fix this problem, go to Start, Run... and type "regedt32" without the quotes to run the Registry Editor.

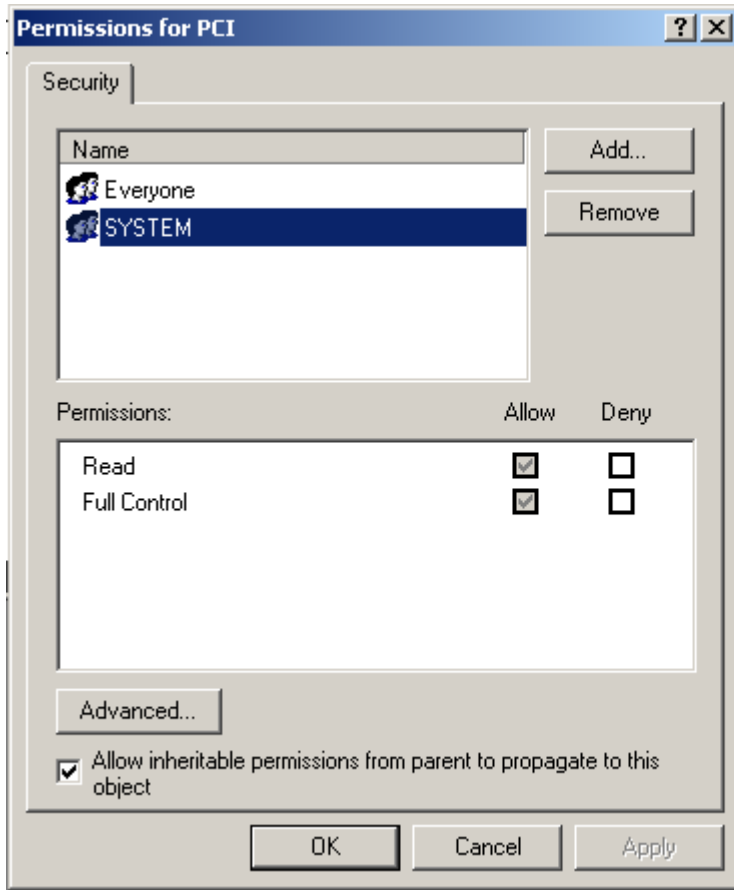
Click on the HKEY_LOCAL_MACHINE window and navigate to HKEY_LOCAL_MACHINE\SYSTEM\CurrentControlSet\ENUM\PCI as shown below.



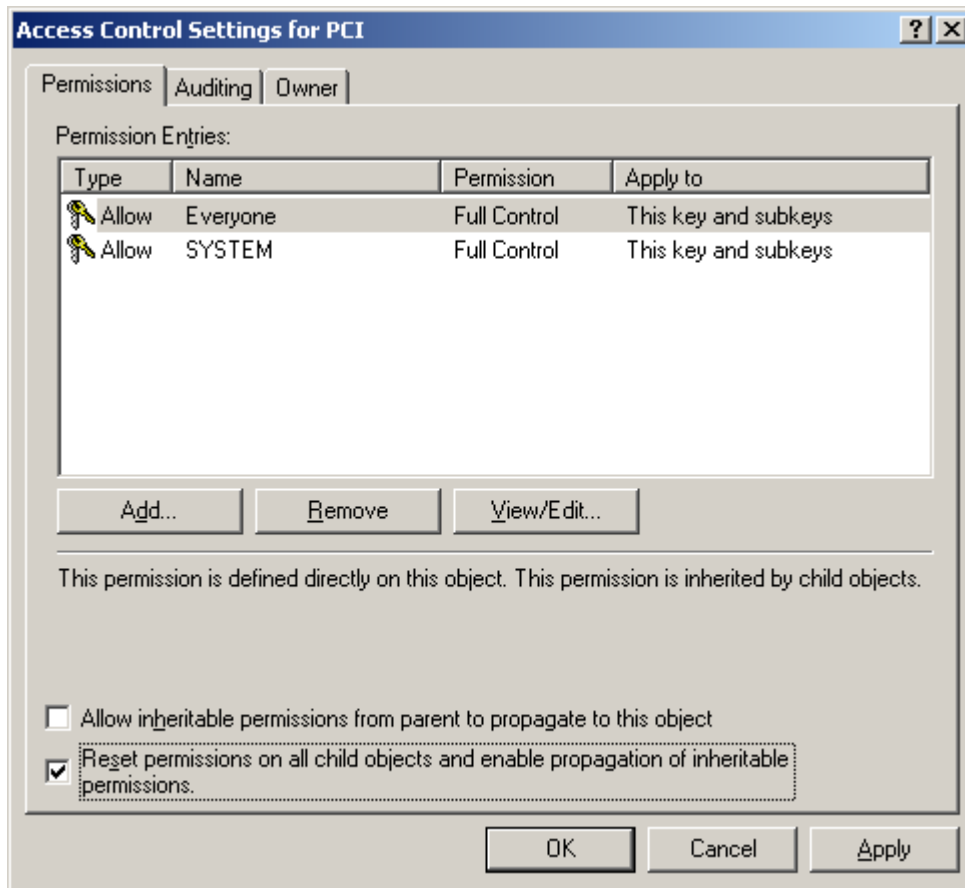
To change the Permissions, you will have to highlight PCI and click on the “Security” option in the Menu Bar.



Now highlight the SYSTEM entry, and make sure that “Allow” is selected for both Full Control, and Read, as shown below.



Now select the "Advanced" button, and in the "Advanced Control Settings" view, make sure that "Reset permission entries on all child objects ..." IS selected, and that "Allow inheritable permissions ..." is NOT selected, as shown below.



Hit "Apply", then "OK", and close the various Regedt32 dialog windows.

Go back to Device Manager, and Select "Reinstall Drivers", and they should install OK.