

HD PVR \ Colossus Media Center Support Release Notes

Version 1.1.29178

6/27/2011

Support for Windows Media Center allows you to use one HD PVR or Colossus to watch, pause and record high definition TV under Windows 7 Media Center from a cable TV or satellite set top box. It operates in a similar way as other Hauppauge TV tuners for Windows Media Center, but records in high definition using H.264 encoding.

This document provides information specific to the indicated version of the installation package.

- [ir32](#) – installation files for IR receive and blaster functionality.
- [mce](#) – the HD PVR MCE Support installer (setup.exe)

Minimum Requirements

Formal hardware requirements have not yet been established. The following hardware specifications are for one of the test systems used during development and are provided as a point of reference. This system exhibited 34% CPU utilization with a 1080i source.

- Pentium D 2.8GHz
- 2GB DDR2 533
- nVidia 9500GT ¹
- HD PVR (all revisions)

- Windows 7 Home Premium or higher ²

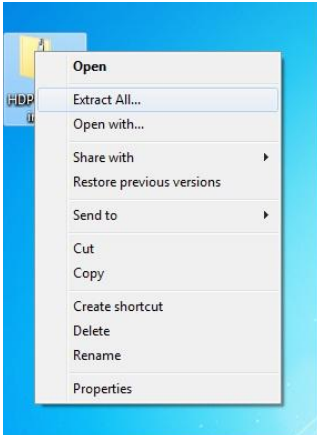
Notes:

1: We strongly recommend using a graphics card supporting hardware acceleration (nVidia 8600 or better or ATI equivalent).

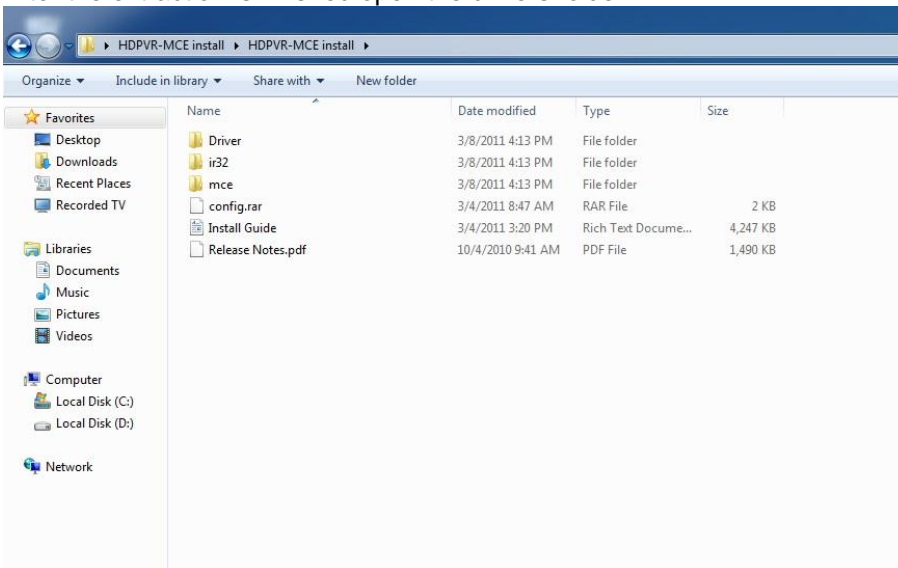
2: HD PVR MCE support requires Windows 7 and will not work with Windows XP Media Center edition or any Windows Vista version.

Installation Instructions:

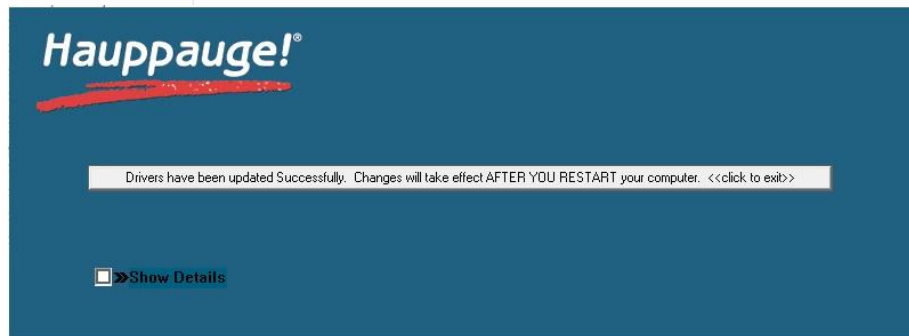
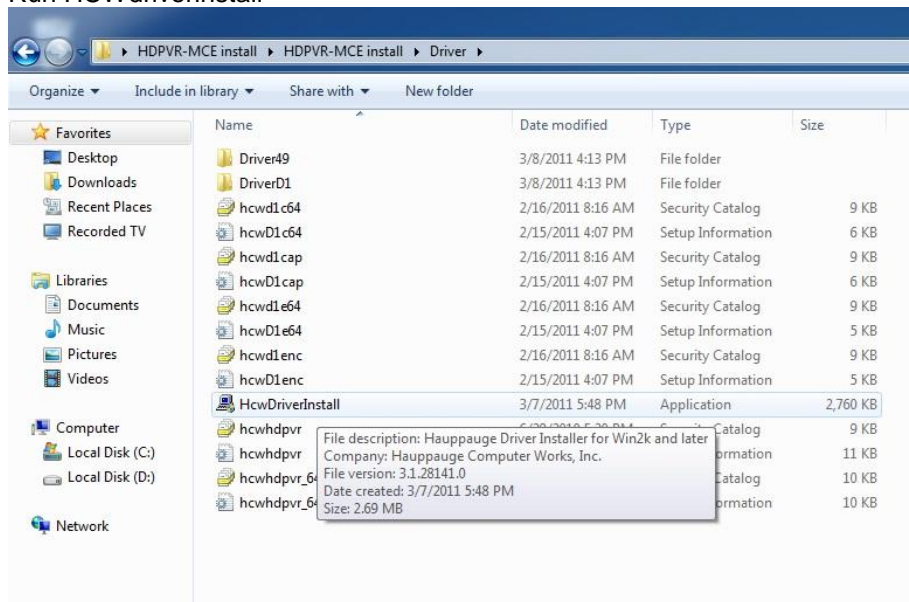
- Uninstall any previous versions (Start->Control Panel->Programs and Features) if new install connect you HD-PVR to the usb port on the PC and connect the power or install your Colossus into an available PCI-E slot.
- Download and install the latest driver From the main page
- http://www.hauppage.com/site/support/support_hdpvr.html
- http://www.hauppage.com/site/support/support_colossus.html
Download and save the MCE install package
Unzip the Driver package by right clicking and choose extract all



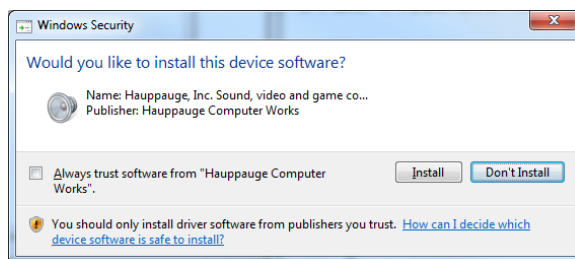
After the extraction is finished open the drivers folder



Run HCWdriverinstall

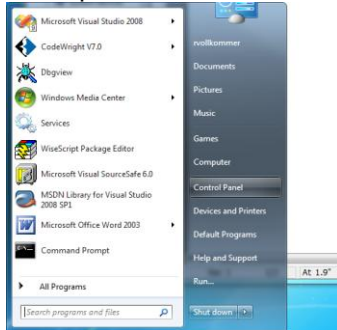


If you get the below message choose install (note this may occur several times during the install process)

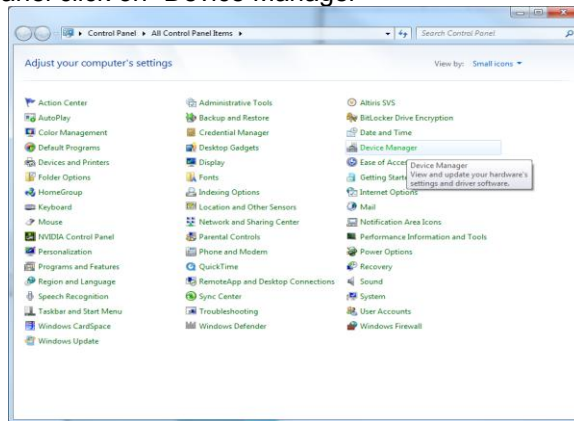


If driver install fails

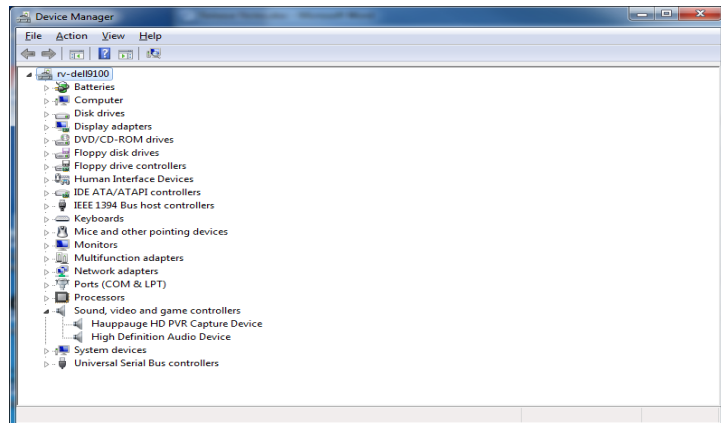
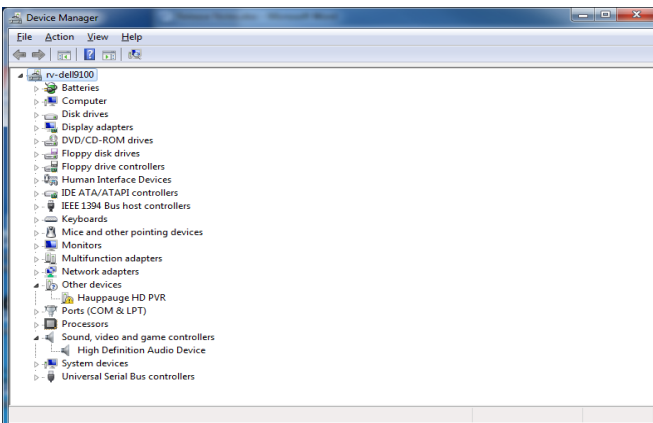
a) Click the Win7 start button and open the “Control Panel”



b) In the Control Panel click on “Device Manager”

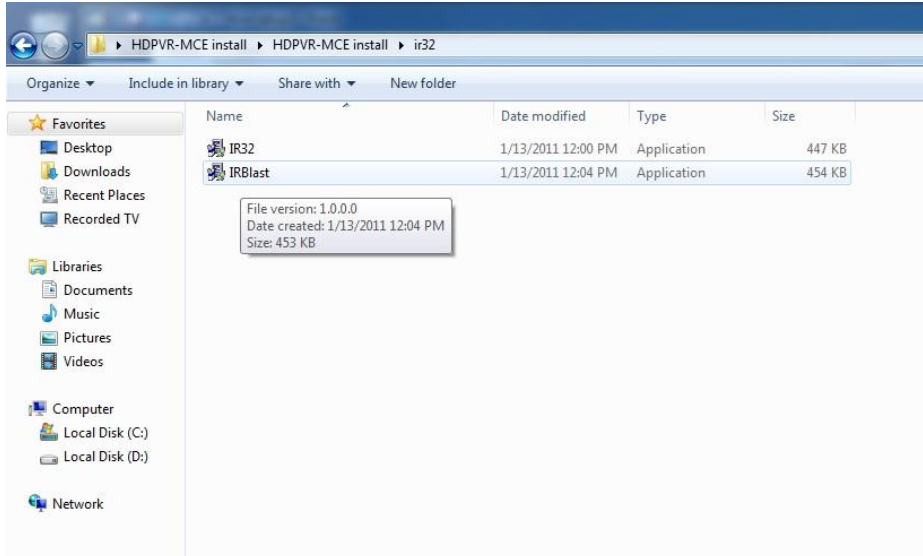


c) If the HDPVR driver is not currently installed the HDPVR or Colossus will appear under the “Other devices” category. If an HDPVR driver is installed the HDPVR will appear under the “Sound, video and game controllers” category. If the device does not appear in either location please check your connections.

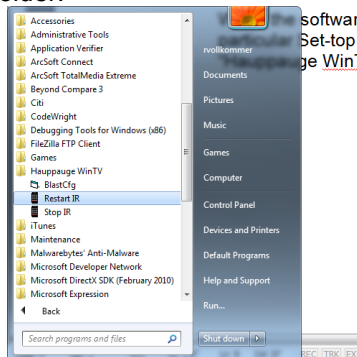


Install and configure the IR software

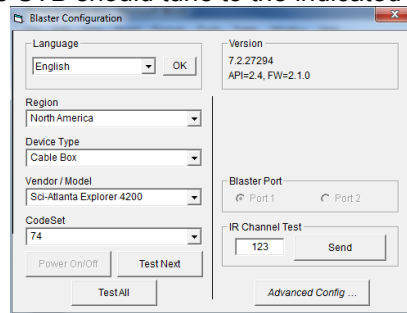
Run the two executables found in the “ir32” folder of the installation package (IR32.exe and IRBlast.exe). Each executable will guide you through the installation process. If you previously installed older versions of this software you must update to this version or the MCE software will not function.



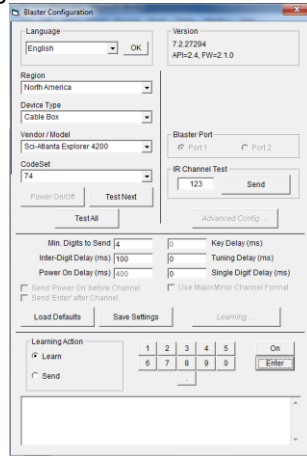
When the software is installed you must configure the IR blaster software to work with your particular Set-top box. To configure the IR blaster launch the “BlastCfg” application in the “Hauppauge WinTV” start menu folder.



- a) The BlastCfg window will open. Configure for your particular STB and test by clicking on the “Send” button. The STB should tune to the indicated channel (123 by default).

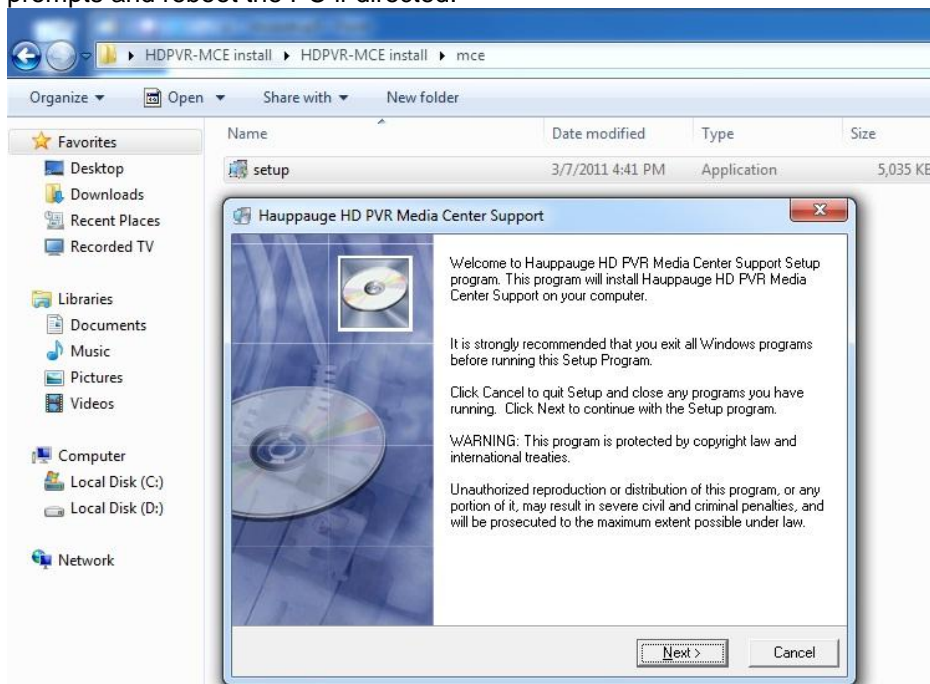


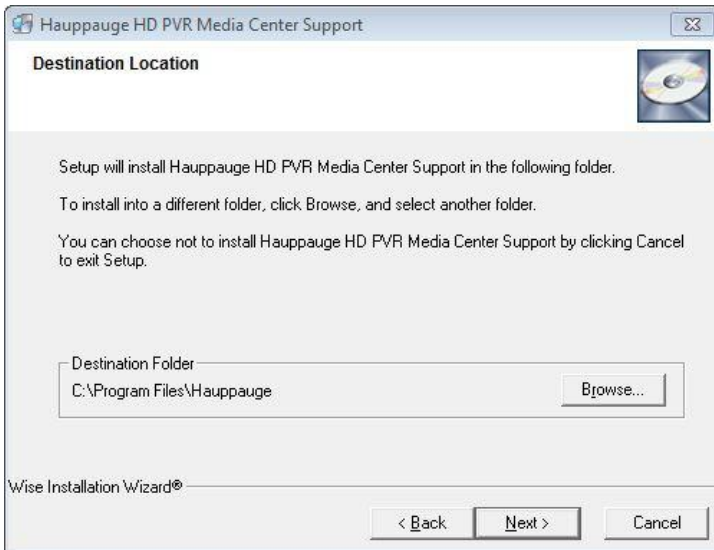
- b) If your STB is not listed you will have to “learn” the numeric keys on your remote. Click on “Advanced Config...” then “Learning...”. Click on the key you want to learn and follow the on screen prompts. Note: It is important that you hold the remote ~1 inch from the HDPVR IR window or the round ir receiver on the ir receiver cable (Colossus) during learning. When you have learned all the numeric keys test the configuration as described above. When learning hold the button on the remote for 2 seconds and release for 1 second and repeat till you get a success or failure message.



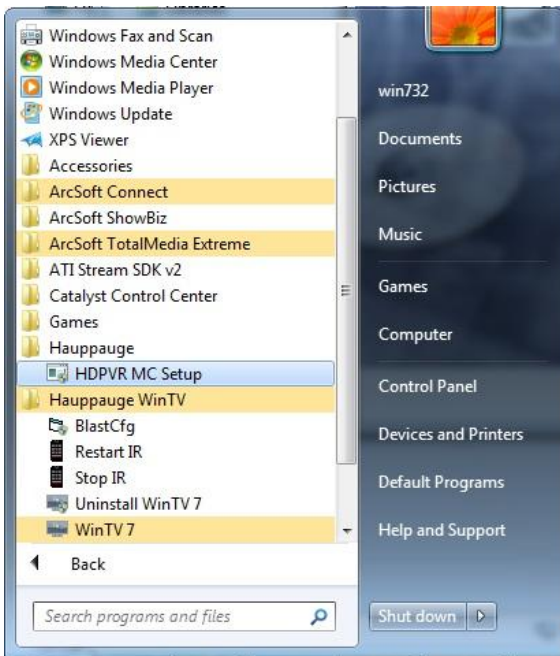
1) Run the HD PVR MCE Installer

Run the executable found in the “mce” folder of the installation package. Follow the installer prompts and reboot the PC if directed.

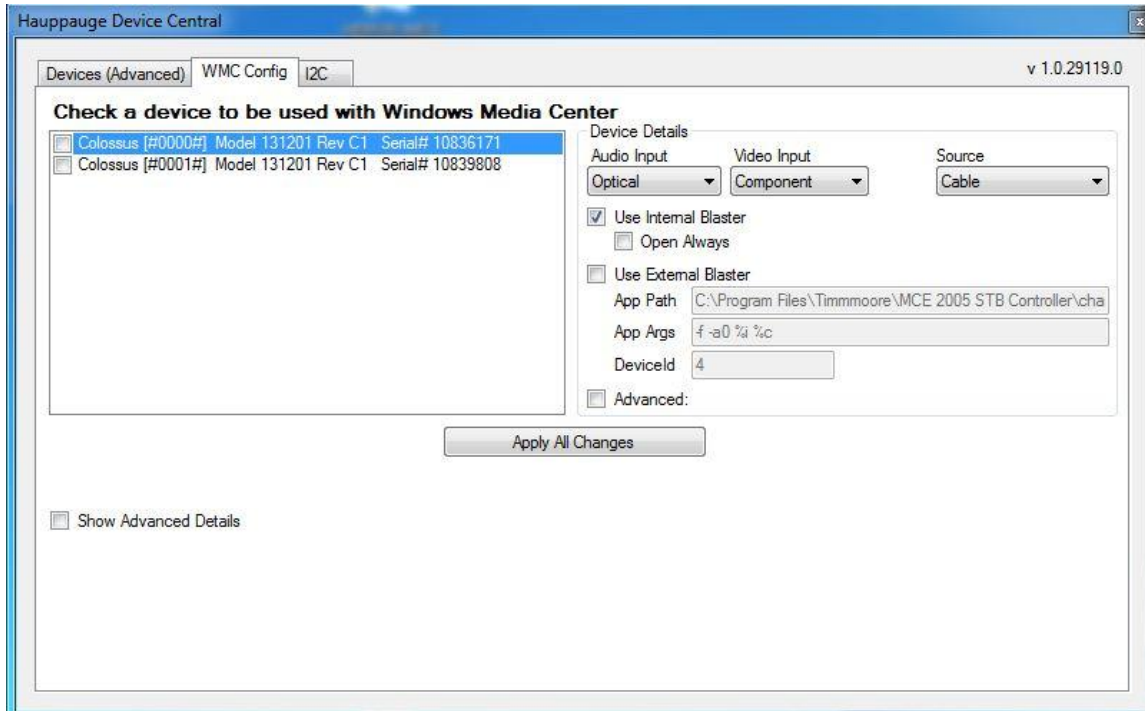




After the reboot go to start all programs Hauppauge and select HD-PVR MCE setup



Select the device in the list (note in this build only one device is supported at this time) with the device selected you need to select your input audio and video sources along with cable or satellite once selected apply the changes and reboot (note the system will not automatically reboot)



Operation

The HD PVR MCE driver provides seamless integration with the Windows 7 Media Center environment. Run MCE “TV Setup” and configure the HDPVR as you would with any other tuner device.

Media Center detects the HDPVR as a “Digital” tuner



Known Issues

- 1) This release only supports a single device
- 2) You may notice prolonged hard disk activity at times during the setup process. We found that continuing the setup process during this activity may cause setup to fail. After selecting the TV provider lineup you are asked to confirm the configuration. We suggest you do not click on next until you see minimal hard disk activity for 15 seconds.



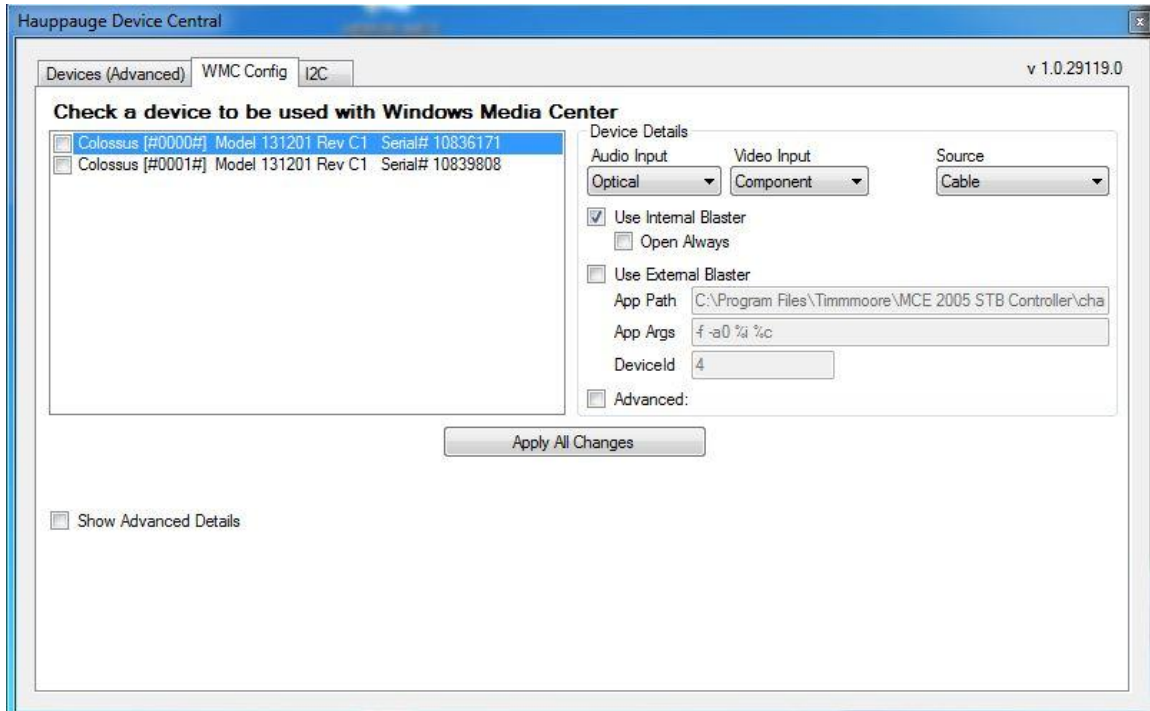
- 3) The scanning percent complete indicator is not working. The indicator will show 100% however the channel discovery process is still in progress. We suggest you wait until the channel count does not increment for 15 seconds and minimal hard disk activity is observed before clicking on "Next". After the setup is complete media center will rescan the database please wait till the hard drive stops before leaving the settings screen.



- 4) The software can be installed on a PC with an existing Arcsoft TME installation, however you will need to reboot after using TME or the HDPVR may no longer operate under MCE.

Additional Information

This version of the MCE tool has provision for external blasting using command line.



Under app path enter the path and executable you will be passing the command line too. Arguments allows you to pass information such as channel number or device id %c will do channel number %i will do device id. Please note we do not provide support for external blasters.

Under advanced you will have an option for pause on channel change and the duration. This is on by default for colossus and should be set so that you do not see the previous channel when changing channels. This is to avoid the chance of audio loss if bitstream audio is being used and an audio format change occurs.

Comments and Feedback

If you would like to comment or provide feedback on this documentation or your experience with this software please email the development team at:

hdpvrb@hauppauge.com

Revision History

1.0.28145

- Initial release

1.0.28171

- Fixed IR blaster failed after system resume.
- Fixed video glitch when connected to PAL capable PS3

1.0.28193

- Include latest WHQL'd HDPVR analog driver (1.5.7.0).
 - Fix HDPVR hang when configured for AAC audio and 720p video and transitioning between the XBOX360 dashboard and a game
 - Fixed sleep/resume hangs
 - Fixed video "flicker" when connected to EU version of PS3.
 - Several changes to improve general reliability.
- Include latest IR support for compatibility with other Hauppauge products.
- Added delay load of IR Blaster DLL which allows service to start if IR software is not installed or an older version than required for the HDPVR MCE software is installed. This prevents channel scan hangs caused by a stopped service.
- Added "Blaster" registry key

[HKEY_LOCAL_MACHINE\SYSTEM\PSWTuner\SWT_HDPVR\Blaster]

And several values to control blaster operation (defaults shown):

- "ActiveBlaster"=dword:00000001
 - 0 - no blaster
 - 1 - use HDPVR blaster
 - 2 - launch external blaster application

This is a bitwise value so multiple bits can be set. When "external" is enabled the application specified by "ExtAppName" will be launched with the command line parameters specified by "ExtAppArgs".

- "FlushOnChannelChange"=dword:00000001
0 - internal queues are not flushed after blasting
1 - flush internal queues after blasting
- "PauseOnChannelChange"=dword:00000001
0 - encoder is not paused before blasting
1 - pause encoder before blasting
- "IntOpenMode"=dword:00000000
0 – internal blaster port is opened once and handle saved for subsequent use.
1 – internal blaster port is opened/closed on each use

Opening the blaster once provides faster operation but the saved handle will be invalidated if any other application accesses the blaster hardware. Once the handle is invalid the MCE software will not be able to blast. For example, if you test the blaster operation using BlastCfg.exe you must reboot the PC (or restart the service) or the blaster will fail when MCE next tries to change the channel.

- "ExtAppName"="D:\MyTests\blast.exe"
Used to specify the full path and name of an external blaster application. External blaster mode must be enabled in "ActiveBlaster" for the application to be executed. Do not include opening and closing quotes in the value you specify.
- "ExtAppArgs"="-c%c"
Used to specify the command line parameters passed to the application specified in "ExtAppName". The MCE software will replace the first occurrence of %c in the command line with the channel number to be blasted.

1.0.28201

- Changed graph building logic to be independent of OS localization. Graph build failures were causing channel scans to hang at 0%.
- Changed HD PVR Tuner naming convention to be independent of legacy devices. Potential for naming conflicts to cause channel scans to hang at 0%.

1.1.28271

- Streamlined transport data handling code for improved stability.
 - o Eliminated the queuing of transport data and deprecated the "FlushOnChannelChange" registry key.
 - o Minimized variance in channel change times. Expect channel change times of ~15 seconds with the internal blaster.
 - o Eliminate "weak signal" messages due to transport handling issues.

Note: Because the HDPVR utilizes a hardware H.264 encoder, it behaves differently than typical tuner based devices. The HDPVR encoder must be reset whenever the input video resolution or bit stream audio type changes. Additionally, the HDPVR encoder may reset due to input video dropouts or errors in bit stream audio. The HDPVR stops streaming at the onset of the reset and resumes ~ 2-4 seconds after the return of stable audio and video.

MCE displays a "Weak signal" message when it sees "bad" or "no" transport data from a source for a predetermined time. The reset time of the HDPVR encoder appears to fall just within the threshold to trigger a weak signal message.

14

The changes in V28271 address disruptions in the transport stream artificially induced due to software issues. Weak signal messages may still occur:

- 1) During channel change

2) During video/audio dropouts from the source

1.1.29111

- Initial Colossus Release
- Added new configuration tool
- Fixed bug causing wrong channel number to be blasted after several days of operation

1.2.29119

- Fixed bug causing audio to be lost on a channel change when using the "optical" audio input.

1.2.29138

-Adds support for bitstream audio. In line with bitstream support pause on channel change has been set to default and the value is user definable to prevent audio loss when a audio format change occurs.

1.2.29178

- Modifications to eliminate the "Weak Signal" messages when changing channels with the HDPVR.